



Alignment Collaborative for Education - ACE

STRONG COMMUNITIES, STRONG SCHOOLS

ACE's Mission

- ▶ The mission of ACE is to align **community resources** in support of **public school strategies** to raise **student achievement**, improve the **health and happiness** of **our children**, create **responsible, productive** and contributing members of **our society**, and advance the **economic and social well-being** of communities served by U-46.



ACE's Vision

- ▶ **ACE** envisions all students starting kindergarten prepared to learn, reading at grade level by 3rd grade, graduating from high school with marketable employment skills and/or enrolling in post-secondary education. They will leave high school prepared to be contributing adults eager to live and work in their community.

School District U-46

The **mission** of School District U-46 is to be a great place for all students to learn, all teachers to teach and all employees to work. All means all. Students come to the classroom with backgrounds representing over 60 cultures making our schools rich with ethnic, cultural and socioeconomic diversity, mirroring the global society to which our students will contribute their skills.

The **vision** at U-46 is to inspire individuals to convert their dreams into realities.

U 46 Fast Facts 2017

Covering 90 square miles, School District U-46 serves portions of 11 communities in the northwest suburbs of Chicago in Cook, DuPage and Kane Counties

School District U-46 serves over 40,000 children in grades preK-12. The District ranks as the second largest in Illinois with 40 elementary schools, 8 middle schools and 5 high schools.

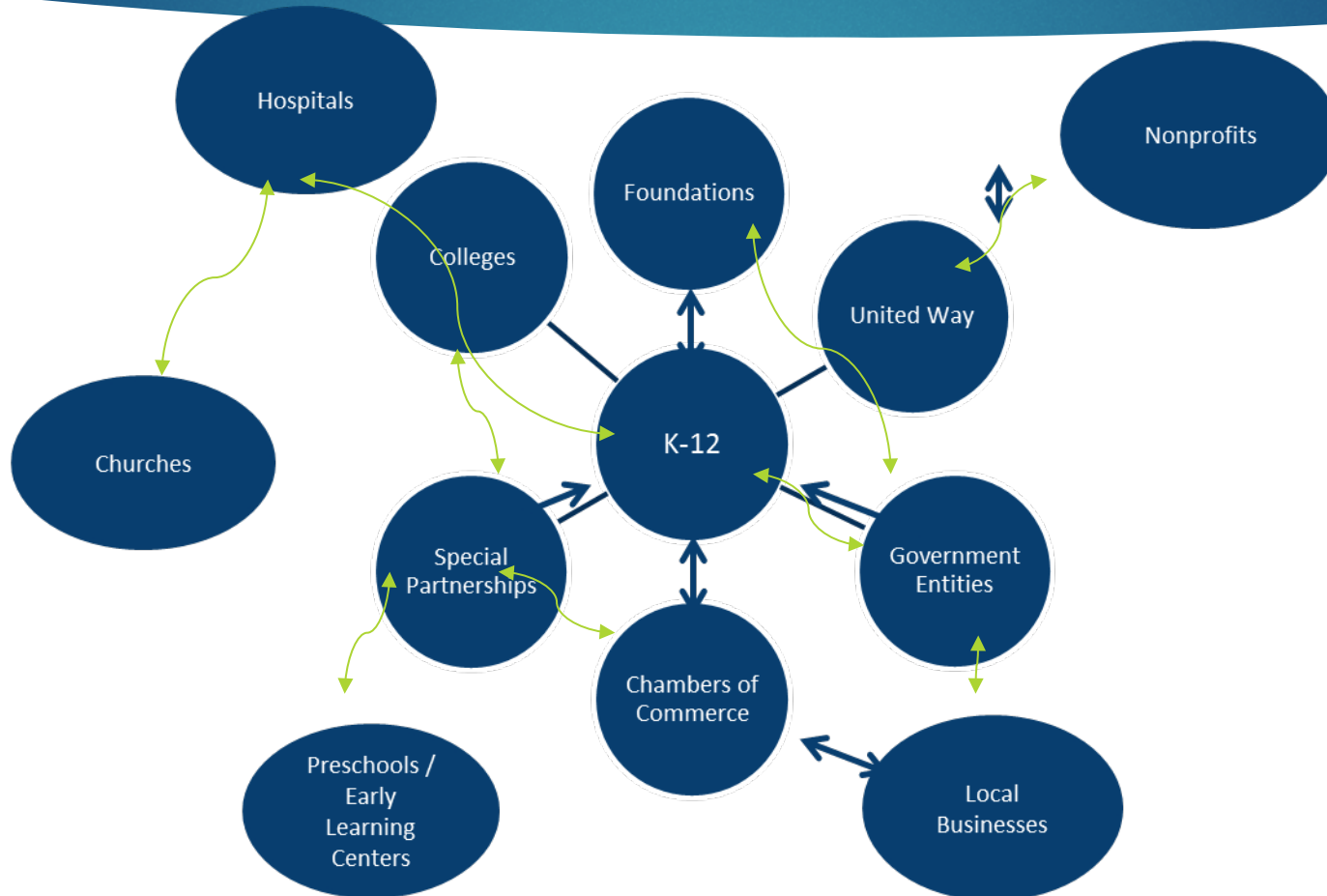
- ▶ 62.2% Low Income
- ▶ 50% Hispanic
- ▶ 86% of students graduated within 4 years
- ▶ 88% of students graduated within 5 years



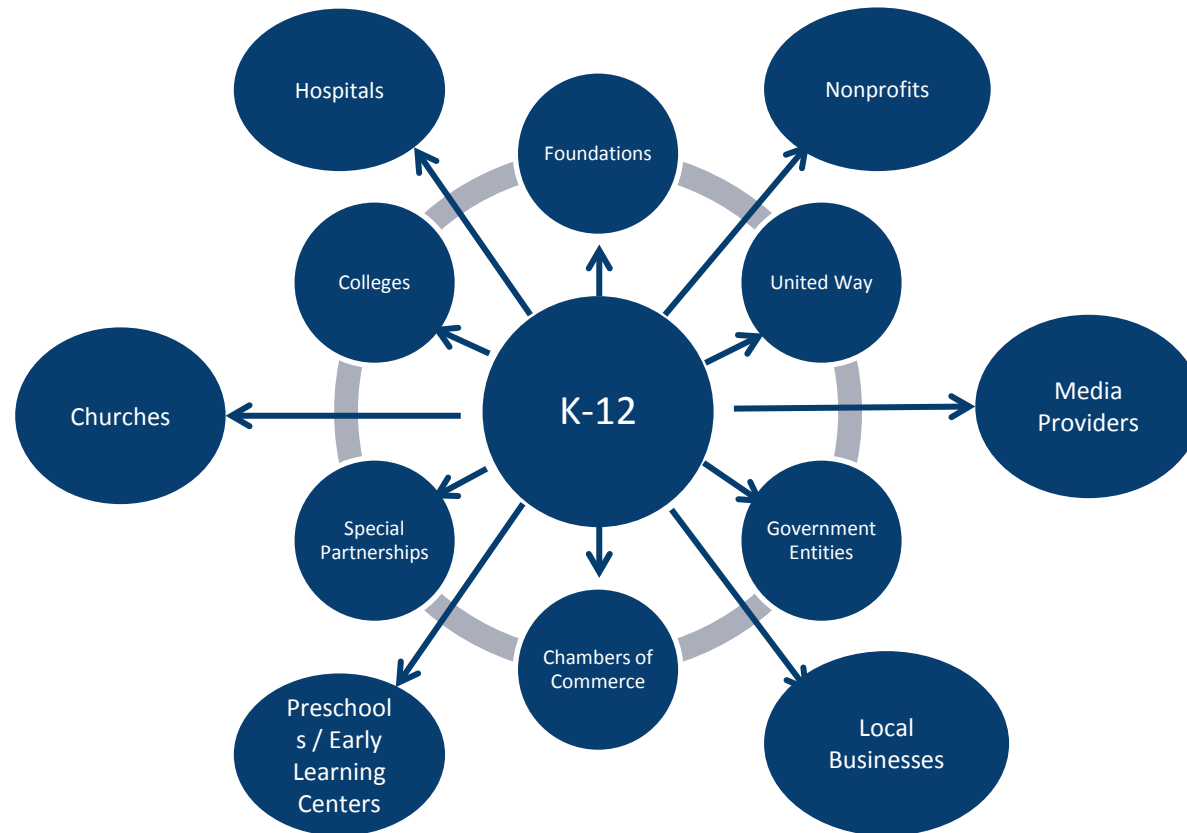
History of Alignment

- ▶ Began in Nashville, TN 2002 through Chamber of Commerce study
- ▶ Rockford, Illinois created Alignment model in 2009
- ▶ Both communities faced challenges similar to Elgin-
 - Significant % graduates not college or career ready
 - High % of at-risk students
 - Many not-for-profits working in the schools on individual partnerships
 - No overall coordination of partnerships
 - Overall impact negligible or unmeasurable
- ▶ Grown to become a national network of shared practices

Current State of Partnerships



Desired State of Partnerships – Collective Impact



Collective Impact

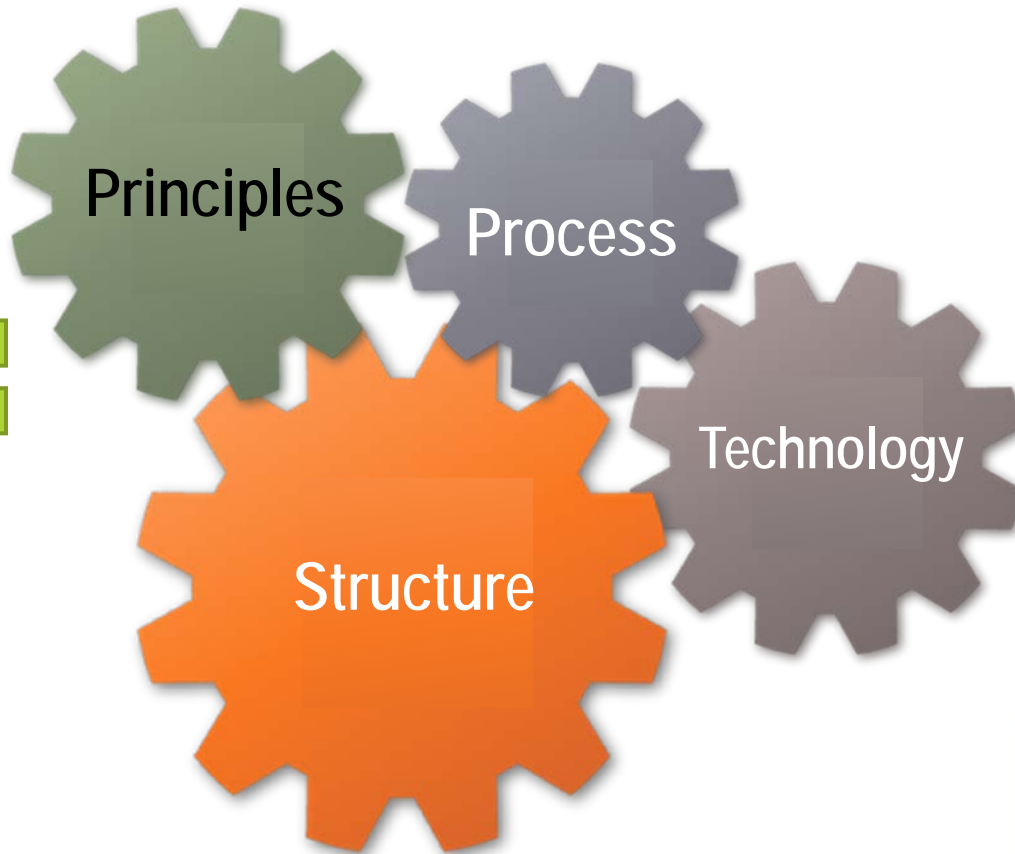


Alignment is....

- ▶ • A system designed to support a public school district's strategic plan for student success by aligning community resources,
- ▶ • An organization of organizations,
- ▶ • A toolset designed to support a system,
- ▶ • Focused on generational change.



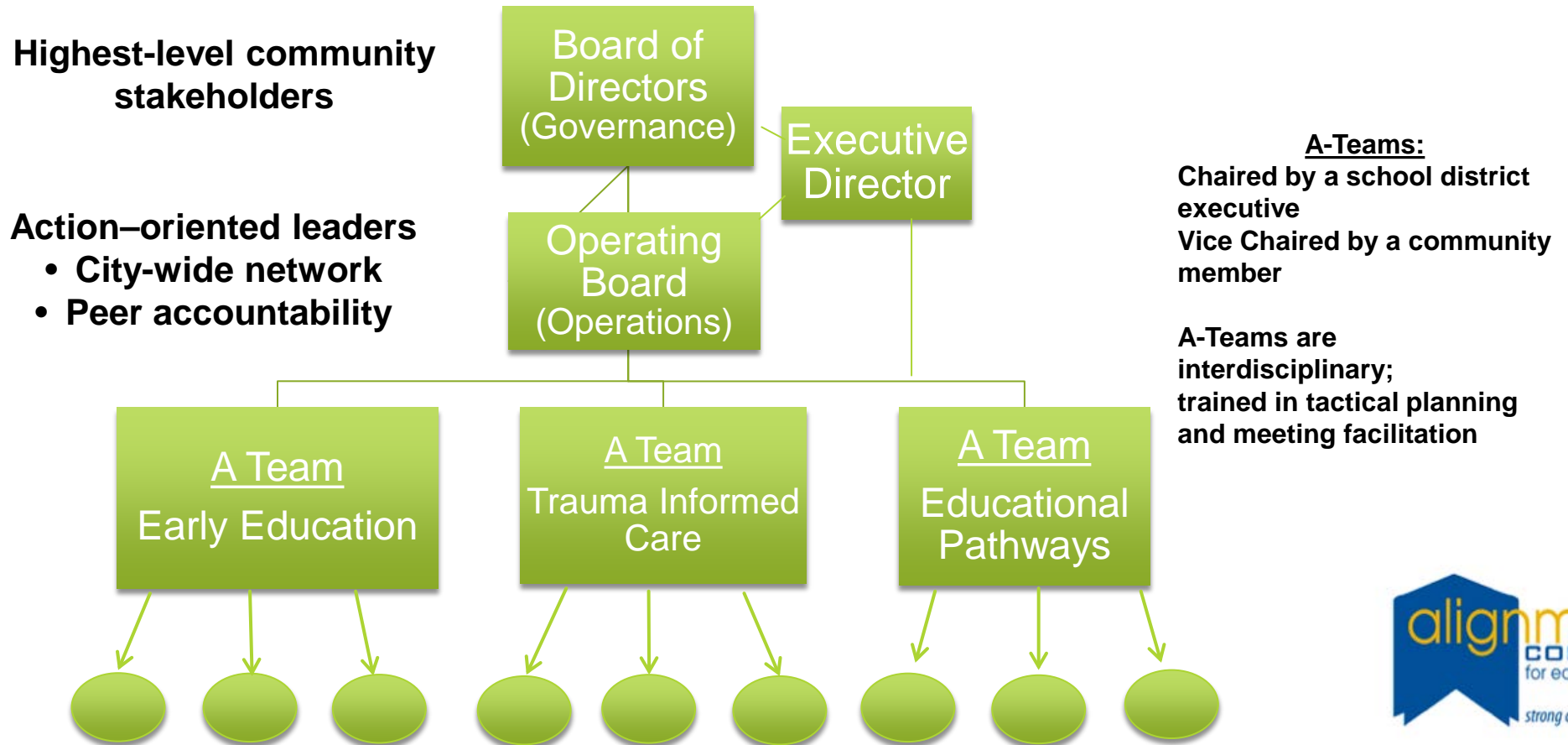
Why Alignment Works



Key Alignment Model Structure Operating Principals

- ▶ The outcome of our work is to enable students to be successful.
- ▶ Alignment with public school priorities is for the welfare of the community's children.
- ▶ The work is designed to support the local school district's Strategic Plans.
- ▶ The work is generational.
- ▶ The work is focused on those challenges and issues that need the most support in order for our students to be successful.
- ▶ While we are targeting academics we are focusing on the whole child.
- ▶ The work is a comprehensive and multifaceted approach designed to enable student success.

ACE Structure

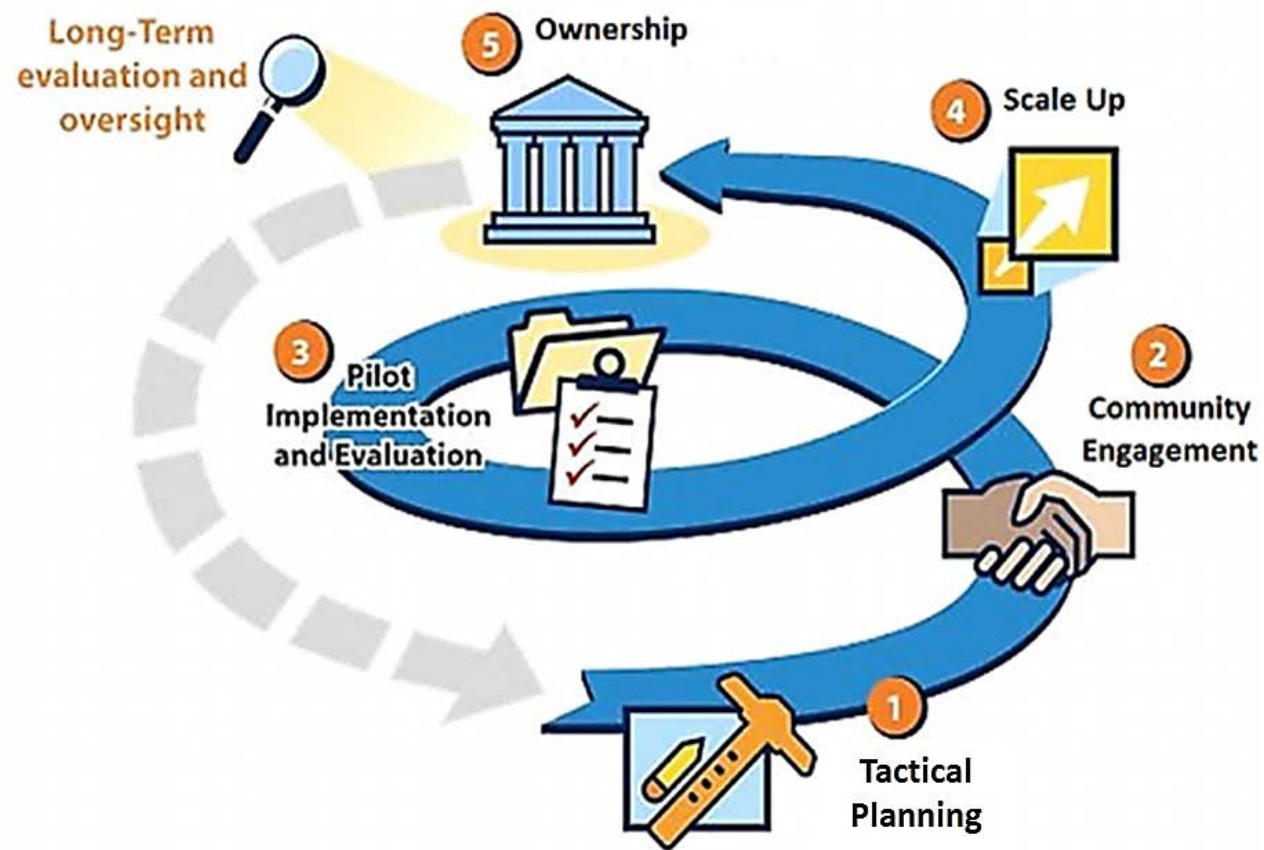


Alignment Results:

▶ *How do we know this model works?*

- District graduation rates increased from 58% to over 80%
- Teen pregnancy in Nashville has reduced 25.5% since 2007
- Established new and successful High School career academy system
- Local businesses are highly engaged and committed to supporting public education
- 64 companies were selected to participate in the 2012 Rockford Academy Expo pilot which took place over 2 days. 1400 students participated. Since then the Expo has continued to grow and expand each year.

System Process Tool



System: Technology Tool

www.align4edu.org

1. Go to www.align4edu.org on the top right corner click **Sign In**
2. Click **Create account** and fill in all the fields and Click **Save**
3. Please allow 24 hours for your account to be approved.
4. You will receive a confirmation email from ACE.
5. Return to www.align4edu.org and Click **Sign In**. Enter your email and temporary password.
Please accept the Terms & Conditions, by selecting "I agree"
6. You will then be prompted to create your permanent password.
7. Click the drop-down menu under "**My Sites**":
 - **Private Site**-This is your private landing page.
 - **Public Site**-You can learn more about ACE and the A-teams



What's in it for you?

Benefits of Alignment:

- ▶ **Greater ROI**—by working together toward common goals, resources are leveraged, duplication is avoided, and efficiency and effectiveness are greatly increased
 - ▶ **Higher-Quality Services**—utilizing highly-structured Invitation To Participate (ITP) process guarantees the best match of expertise to address very targeted issues
 - ▶ **Enhanced Capacity**—a collective effort enhances the impact of each of organization, while generating greater impact and involvement across districts and communities
 - ▶ **Economic Development**—envisioning all students becoming contributing adults, prepared with the job skills needed by employers and the tools for career success
- ▶ **By participating in ACE, You...**
 - ▶ Support a long-term process of social change without identifying any particular solution in advance
 - ▶ Recognizing that social change can come from the gradual improvement of an entire system over time
 - ▶ In the end you help create and sustain the collective processes, measurement reporting systems, and community leadership that enable cross-sector coalitions to be champions of change

Future....

Educational alignment will make us “Communities of Choice” for businesses, families, investors and visitors.

- ▶ Our skilled and educated workforce will attract and support the growth of cutting edge business and industry.
- ▶ Our high quality schools and healthy, vibrant communities will attract new families to the area, creating demand for new housing and overall economic growth for our area.

By Participating in Alignment You ...

- ▶ Support a long-term process of social change without identifying any particular solution in advance
- ▶ Recognizing that social change can come from the gradual improvement of an entire system over time
- ▶ In the end you help create and sustain the collective processes, measurement reporting systems, and community leadership that enable cross-sector coalitions to be champions of change

Alignment Collaborative For Education



www.align4edu.org

1750 Grandstand Place Suite 5
Elgin, Illinois 60123
224-227-7534 or 224-227-7575

Contact: Cherie Murphy, Executive Director
cheriemurphy1652@gmail.com

